

SPEC SHEET + MEASUREMENTS



Carhartt® Thermal-Lined Duck Active Jac. CT106678

Product photo



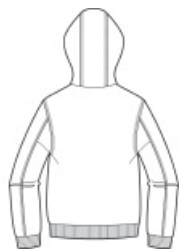
Whether you're on a land survey or construction road crew, this hooded jacket is designed to keep you comfortable when the weather is iffy.

- 12-ounce, firm hand, 100% ring spun cotton duck canvas
- Wind Fighter® technology tames wind
- 100% polyester thermal lining
- Attached thermal-lined three-piece hood with drawcord closure
- Full-length brass front zipper
- Two interior pockets: one zippered, one hook and loop
- Two large lower-front pockets
- Rib knit cuffs and waistband
- Carhartt-strong, triple-stitched main seams
- Carhartt label sewn on left pocket
- Carhartt Warmth Rating Earned: Level 1—Warm
- Loose fit

Sketches



front



back

CARE INSTRUCTIONS

Color Black: Machine wash cold with like colors. Do not bleach. Tumble dry low remove promptly. Steam iron shell only. All colors except Black: Machine wash warm with like colors. Do not bleach. Tumble dry medium remove promptly. Steam iron shell only.

SPEC SHEET + MEASUREMENTS



Carhartt® Thermal-Lined Duck Active Jac. CT106678

PRODUCT MEASUREMENTS

	S	M	L	XL	2XL	3XL	4XL	5XL	6XL
Body Length at Back	28	29	29	30	30	31	31	31	31
Chest	23 3/4	25 3/4	27 3/4	29 3/4	31 3/4	33 3/4	35 3/4	37 3/4	39 3/4
Sleeve Length from Center Back	36 4/5	37 7/8	38 1/2	39 1/8	39 3/4	40 1/4	40 3/4	41 1/4	41 3/4

Body Length at Back: Measured from high point shoulder to finished hem at back.

Chest: Measured across the chest one inch below armhole when laid flat.

Sleeve Length from Center Back: Measure from Center Back neck to shoulder point to sleeve hem.

SIZE CHARTS

	S	M	L	XL	2XL	3XL	4XL	5XL	6XL
Chest	34-36	38-40	42-44	46-48	50-52	54-56	58-60	62-64	66-68

SPEC SHEET + MEASUREMENTS



Carhartt® Thermal-Lined Duck Active Jac. CT106678

HOW TO MEASURE



CHEST

Measure under the arm and around the fullest part of the chest with arms down, keeping tape horizontal.

COLORS

Please note: PMS code information is shown only when an exact match is available.



Black
PMS BLACK
C



Carhartt
Brown
PMS 463C



Dark Navy
PMS 533C